

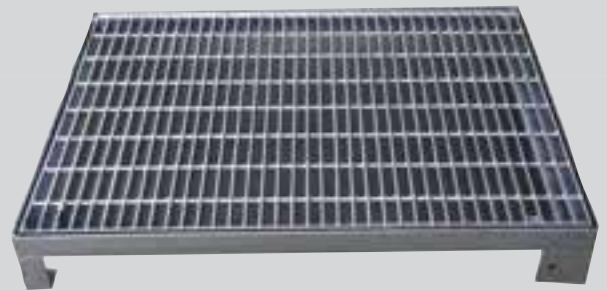


CIVILCAST®

Precast & Steel Solutions for Civil



SURCHARGE GRATE



ITEM#	ITEM DESCRIPTION	FRAME			GRATE			CLEAR OPENING	
		Length	Width	Depth	Length	Width	Depth	Length	Width
GT66SUR	700x700 Raised Grate/ Frame M/D Bolt Down	710	710	55	690	690	50	600	600
GT96SUR	1000x700 Raised Grate/Frame M/D Bolt Down	1110	710	55	988	688	50	900	600
GT99SUR	1000x1000 Raised Grate/Frame M/D Bolt Down	1110	1110	55	988	988	50	900	900
GT1212SUR	1400x1400 Raised Grate/Frame M/D Bolt Down	1310	1310	55	2x640	1290	50	1200	1200
GT1515SUR	1500x1500 Raised Grate/Frame M/D Bolt Down	1712	1712	55	2x833	1666	50	1600	1600
Cast-in Leg	Surcharge Grate Cast-In Kit	(Refer to diagram on opposite page for dimensions)							