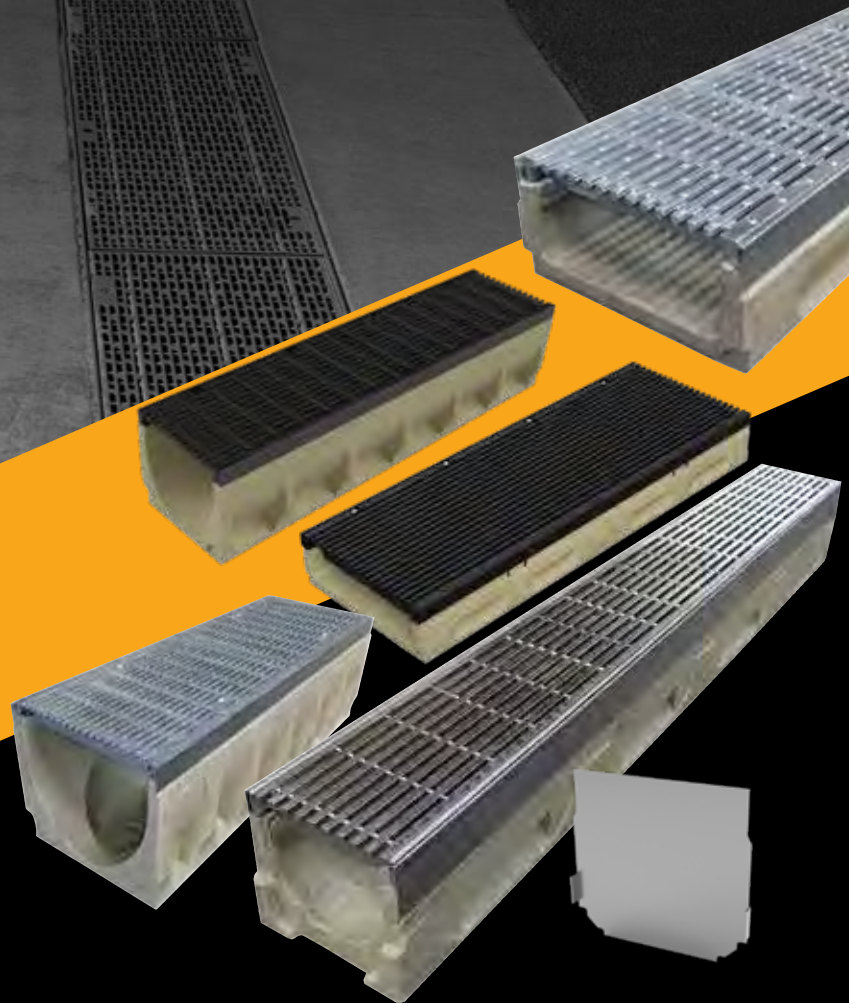


# Polymer Trench Drain System



Quality Assurance

**JAS-ANZ**



ISO 9001:2015

**1300 012 278**

[sales@civilcast.com.au](mailto:sales@civilcast.com.au)  
[civilcast.com.au](http://civilcast.com.au)

## About Us

Civilcast is an Australian-owned company specialising in the supply of stormwater, water, sewer infrastructure products, electrical and communication products.

## Why choose Civilcast?

- ★ We're the experts in civil precast & steel products.
- 🕒 Fast lead times
- 📦 Large stocks on hand
- 🏠 Complete range
- 🔧 Solution providers for custom products.

We have a broad suite of products including:

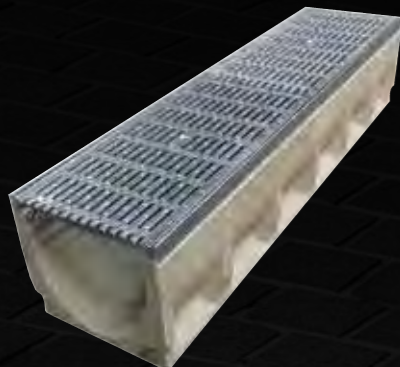
- Polymer channel & grating
- Galvanised mild steel grating
- Ductile iron covers
- Precast concrete products
- Water utility infrastructure products
- Civil consumables

# Polymer solutions for a range of applications.



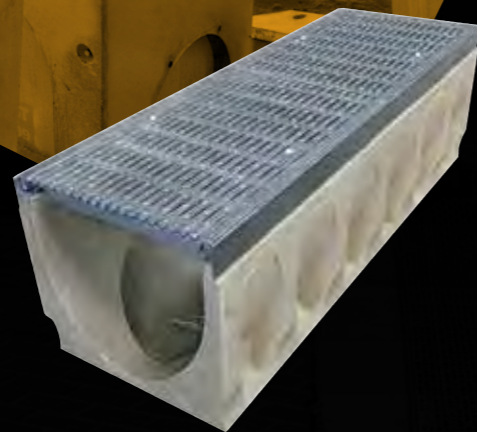
### PCHG-1170 GV-D

Polymer Channel Kit, 100mm c/o x 170mm x 1m length, Gal edge, Galvanised ductile iron HG Class D grate with locking mechanism



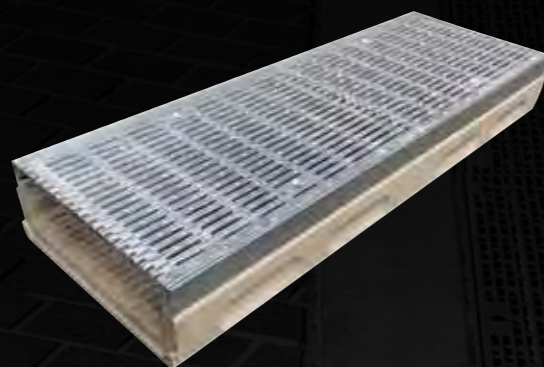
### PCHG-2225 GV-D

Polymer Channel Kit, 200mm c/o x 225mm x 1m length, Gal edge, Galvanised ductile iron HG Class D grate with locking mechanism



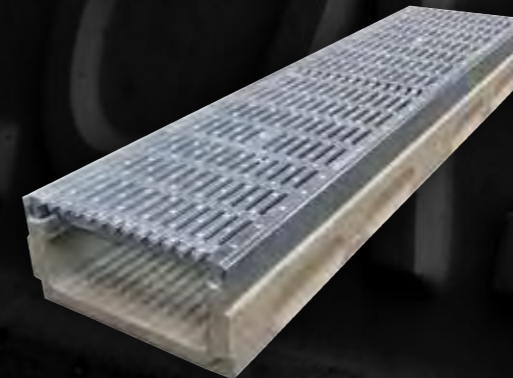
### PCHG-3325 GV-D

Polymer Channel Kit, 300mm c/o x 325mm x 1m length, Gal edge, Galvanised ductile iron HG Class D grate with locking mechanism



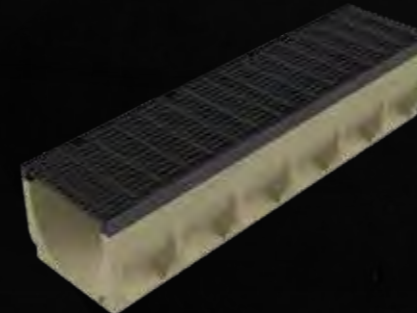
### PCHG-3130 GV-D

Polymer Channel Kit, 300mm c/o x 130mm x 1m length, Gal edge, Galvanised Ductile iron HG Class D grate with locking mechanism



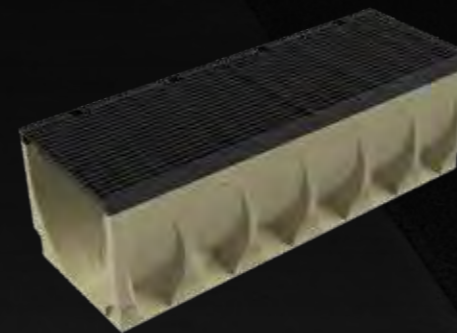
### PCHG-2130 GV-D

Polymer Channel Kit, 200mm c/o x 130mm x 1m length, Gal edge, Galvanised ductile iron HG Class D grate with locking mechanism



### PCHG-2225 DI-E

Polymer Channel Kit, 200mm c/o x 225mm x 1m length, Ductile iron edge and HG Class E grate with locking mechanism



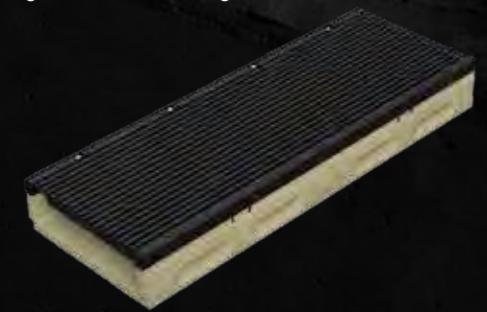
### PCHG-3325 DI-E

Polymer Channel Kit, 300mm c/o x 325mm x 1m length, Ductile iron edge and HG Class E grate with locking mechanism



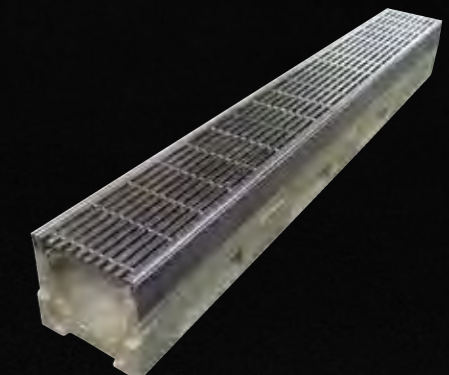
### PCHG-2130 DI-E

Polymer Channel Kit, 200mm c/o x 130mm x 1m length, Ductile iron edge and HG anti slip Class E grate with locking mechanism



### PCHG-3130 DI-E

Polymer Channel Kit, 300mm c/o x 130mm x 1m length, Ductile iron edge and HG anti slip Class E grate with locking mechanism



### PCHG-1120 SS-B

Polymer Channel Kit, 100mm c/o x 120mm x 1m length, SS edge, 304 Stainless steel GripTech HG Class B grate with locking mechanism

## END CAPS



### PCEC-300

End Cap suit PCHG-3325 GV-D  
and PCHG-3300 DI-E



### PCEC-200

End Cap suit PCHG-2225 GV-D  
and PCHG-2225 DI-E



### PCEC-100

END CAP SUIT PCHG-1170 GV-D  
and PCHG-1120 SS-B

### PCEC-3130 SS

End Cap suit PCHG-3130 DI-E

### PCEC-2130 SS

End Cap suit PCHG-2130 GV-D



**AUSTRALIAN  
MADE & OWNED**

Our locations:

**HEAD OFFICE & WAREHOUSE:**

Building B, 33-83 Quarry Road  
Erskine Park NSW 2759

**QUEENSLAND OFFICE:**

29-31 Frank Heck Cl,  
Beenleigh QLD 4207

**MANUFACTURING PLANT & WAREHOUSE:**

2 O'Sullivan Place,  
Goulburn NSW 2580

**VICTORIA OFFICE:**

76 Carroll Road (Enter via Cleeland Rd),  
Oakleigh South VIC 3167



**1300 012 278**

[sales@civilcast.com.au](mailto:sales@civilcast.com.au)  
[civilcast.com.au](http://civilcast.com.au)