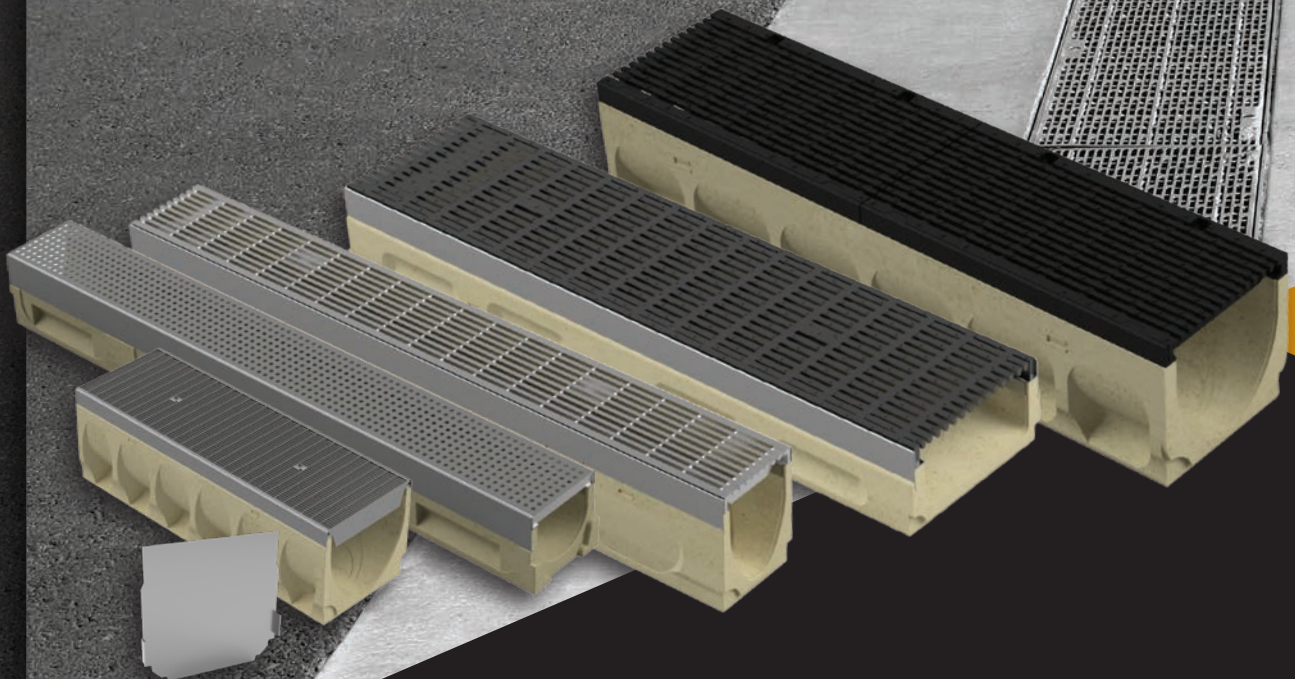




# CIVILCAST

*Precast & Steel Solutions for Civil*

## POLYMER TRENCH DRAIN SYSTEMS



1300 012 278

[sales@civilcast.com.au](mailto:sales@civilcast.com.au)  
[civilcast.com.au](http://civilcast.com.au)

Quality Assurance

**JAS-ANZ**



ISO 9001:2015

## ABOUT US

---

Civilcast is an Australian owned company specialising in the supply of precast and steel products for stormwater, water, sewer, infrastructure, electrical and communication applications for the civil construction industry.

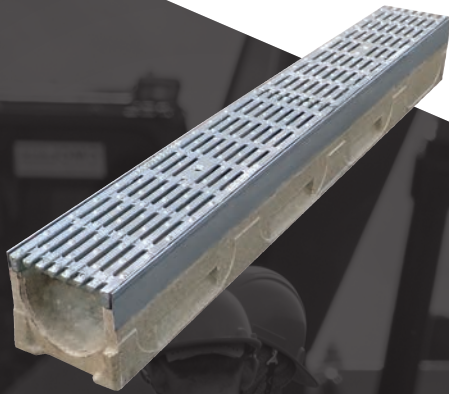
We have a broad suite of products including:

- Polymer channel and grating
- Galvanised mild steel grating
- Ductile iron covers
- Precast concrete products
- Water utility infrastructure products
- Civil consumables

## WHY CHOOSE CIVILCAST?

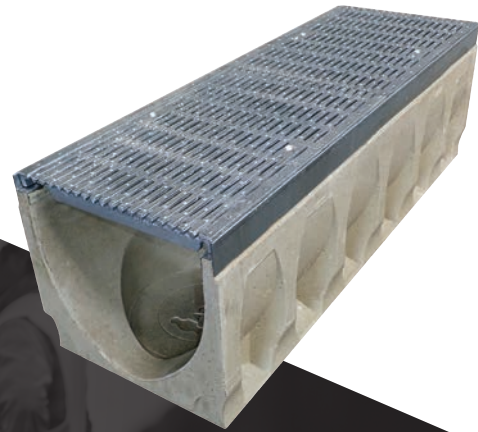
---

- ★ **Civil precast, steel and polymer experts**
- 🕒 **Fast lead times**
- 📦 **Large stocks**
- 🏠 **Complete range**
- 🧠 **Vast experience and knowledge**
- 🔧 **Solution providers for custom products**
- 👤 **We're easy to deal with - from order to delivery**



### PCHG-1170 GV-D

Polymer Channel Kit, 100mm c/o x 170mm x 1m length, Gal edge, Galvanised ductile iron HG Class D grate with locking mechanism



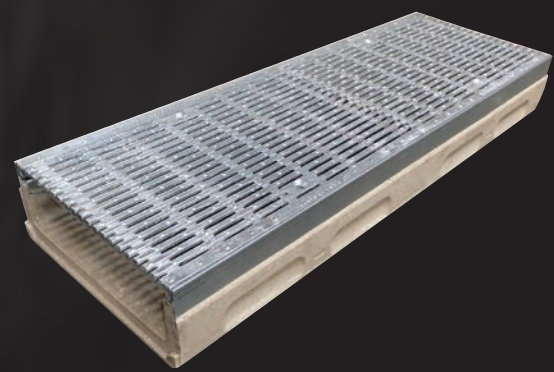
### PCHG-3325 GV-D

Polymer Channel Kit, 300mm c/o x 325mm x 1m length, Gal edge, Galvanised ductile iron HG Class D grate with locking mechanism



### PCHG-2225 GV-D

Polymer Channel Kit, 200mm c/o x 225mm x 1m length, Gal edge, Galvanised ductile iron HG Class D grate with locking mechanism



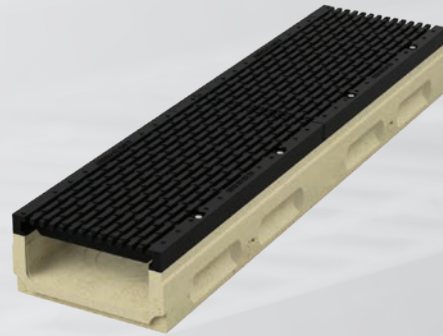
### PCHG-3130 GV-D

Polymer Channel Kit, 300mm c/o x 130mm x 1m length, Gal edge, Galvanised Ductile iron HG Class D grate with locking mechanism



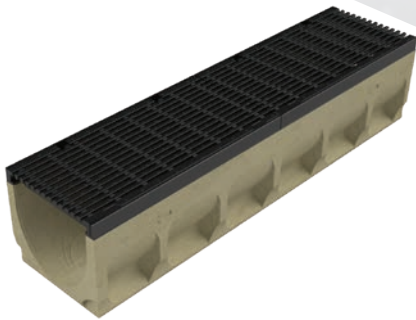
### **PCHG-2130 GV-D**

Polymer Channel Kit, 200mm c/o x 130mm x 1m length, Gal edge, Galvanised ductile iron HG Class D grate with locking mechanism



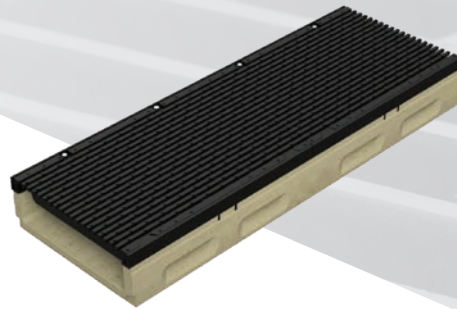
### **PCHG-2130 DI-E**

Polymer Channel Kit, 200mm c/o x 130mm x 1m length, Ductile iron edge and HG anti slip Class E grate with locking mechanism



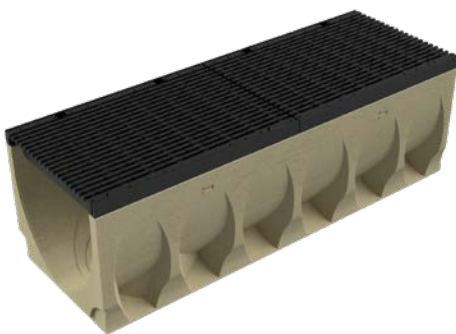
### **PCHG-2225 DI-E**

Polymer Channel Kit, 200mm c/o x 225mm x 1m length, Ductile iron edge and HG Class E grate with locking mechanism



### **PCHG-3130 DI-E**

Polymer Channel Kit, 300mm c/o x 130mm x 1m length, Ductile iron edge and HG anti slip Class E grate with locking mechanism



### **PCHG-3300 DI-E**

Polymer Channel Kit, 300mm c/o x 325mm x 1m length, Ductile iron edge and HG Class E grate with locking mechanism



### **PCHG-1120 SS-B**

Polymer Channel Kit, 100mm c/o x 120mm x 1m length, SS edge, 304 Stainless steel GripTech HG Class B grate with locking mechanism

## END CAPS



### PCEC-100

End Cap suit PCHG-1170 GV-D and PCHG-1120 SS-B



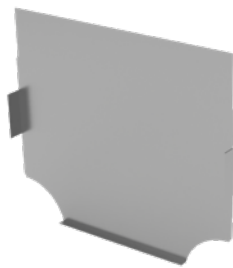
### PCEC-200

End Cap suit PCHG-2225 GV-D and PCHG-2225 DI-E



### PCEC-300

End Cap suit PCHG-3325 GV-D and PCHG-3300 DI-E



### PCEC-2130 SS

End Cap suit PCHG-2130 GV-D



### PCEC-3130 SS

End Cap suit PCHG-3130 DI-E



#### CHECK OUT THE CIVILCAST KNOWLEDGE BANK

Watch our video on **How to assemble a Polymer Trench Grate**



Disclaimer: Information presented in this document is supplied in good faith and to the best of our knowledge was accurate at the time of preparation. The provision of this information should not be construed as a recommendation to use any of our products in violation of any patent rights or in breach of any statute or regulation. Users are advised to make their own determination as to the suitability of this information in relation to their particular purpose or specific circumstances. Since the information contained in this document may be applied under conditions beyond our control, no responsibility can be accepted by Civilcast, or its staff for any loss or damage caused by any person acting or refraining from action as a result of misuse of this information.



1300 012 278

sales@civilcast.com.au  
civilcast.com.au

#### Our locations:

**HEAD OFFICE & WAREHOUSE:**  
Building B, 33-83 Quarry Road  
Erskine Park NSW 2759

**MANUFACTURING:**  
1 Campbell Street,  
Cowra NSW 2794

**NEWCASTLE:**  
50 Enterprise Drive,  
Beresfield NSW 2332

**QUEENSLAND:**  
29-31 Frank Heck Close,  
Beenleigh QLD 4207

**VICTORIA:**  
76 Carroll Road,  
Oakleigh South VIC 3167  
(Enter via Cleeland Rd)