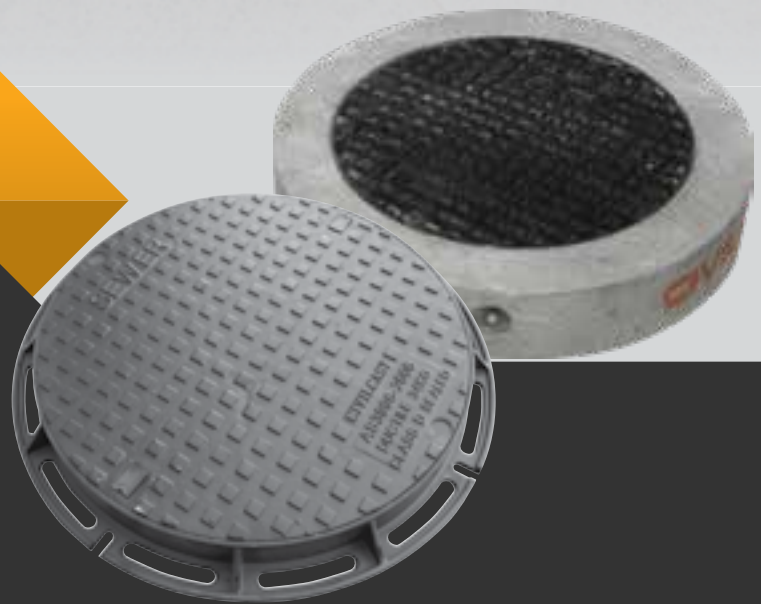




CIVILCAST®

Precast & Steel **Solutions** for Civil

MANHOLE COVERS & ENCASEMENTS



| ITEM# | ITEM DESCRIPTION | TOTAL DIAMETER | CLEAR OPENING DIAMETER |
|---------------|--|----------------|------------------------|
| JMT600CIB | Cast Iron Manhole Cover & Frame 615mm Diameter Class B | 800 | 615 |
| JMT600CID | Cast Iron Manhole Cover & Frame 615mm Diameter Class D | 800 | 615 |
| JMT600CIB ENC | Encased Cast Iron Manhole Cover & Frame 615mm Diameter Class B | 900 | 615 |
| JMT600CID ENC | Encased Cast Iron Manhole Cover & Frame 615mm Diameter Class D | 900 | 615 |