



**CIVILCAST®**

*Precast & Steel Solutions for Civil*

# Solid Wall Custom Road Pits



Quality Assurance

**JAS-ANZ**



ISO 9001:2015

**1300 012 278**

[sales@civilcast.com.au](mailto:sales@civilcast.com.au)

[civilcast.com.au](http://civilcast.com.au)



## OVERVIEW

Civilcast is a privately owned and operated company, dedicated to the manufacture and distribution of precast and steel products designed to meet the diverse needs of civil construction applications. Our proficiency spans stormwater, water, sewer, infrastructure, electrical, and communication products within the civil construction sector.

Our reputation in the industry has been built on providing exceptional service coupled with:






-  **LARGE STOCKS**
-  **FAST LEAD TIMES**
-  **EXPERT ADVICE**
-  **CUSTOM SOLUTIONS**

Our commitment to providing exceptional service extends across our vast network of branches located in New South Wales, Queensland, Victoria, and South Australia. With our extensive presence in these regions, we have established a strong team of dedicated operations specialists in each location.

## SOLID WALL CUSTOM ROAD PITS



## FEATURES & BENEFITS

-  **Size** - our range of precast solid wall custom road pits are available in a diverse range of standard and tailor made dimensions, guaranteeing an ideal solution for your project.
-  **Design** - crafted and manufactured to comply with Australian Standards, suitable for Class D applications.
-  **Lifespan** - 100 years.
-  **Load Rating** - Our custom solid wall road pits are crafted to meet Class D load rating according to the Australian Standard AS/NZ2996. This renders our road pits suitable for major road projects.
-  **Certified** - Engineer certified to comply with Australian Standards for Local Council and Transport Authority requirements.

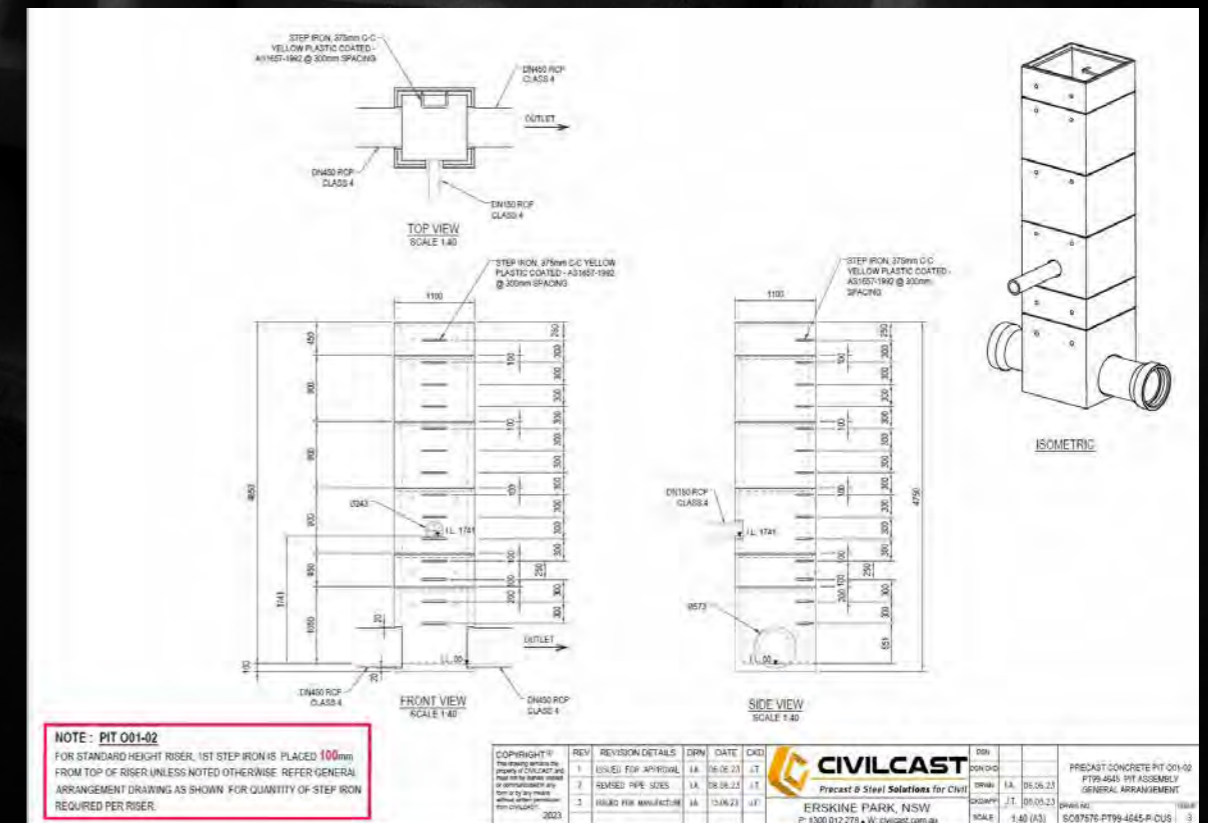


## DESIGN TABLES

PITS	RISERS
600 x 600 x 600	600 x 600 x 600
	600 x 600 x 450
	600 x 600 x 300
	600 x 600 x 150
700 x 700 x 700	700 x 700 x 700
	700 x 700 x 300
	700 x 700 x 150
850 x 670 x 900	850 x 670 x 600
	850 x 670 x 300
	850 x 670 x 150
900 x 600 x 900	900 x 600 x 900
	900 x 600 x 600
	900 x 600 x 450
	900 x 600 x 150
900 x 900 x 1050	900 x 900 x 900
	900 x 900 x 750
	900 x 900 x 600
	900 x 900 x 300
900 x 900 x 900	900 x 900 x 450
	900 x 900 x 300
	900 x 900 x 150
	1200 x 1200 x 1200
1200 x 1200 x 1200	1200 x 1200 x 1200
	1200 x 1200 x 900
	1200 x 1200 x 600
	1200 x 1200 x 300
1540 x 700 x 1500	1200 x 1200 x 200
	1500 x 700 x 1200
	1500 x 700 x 600
	1500 x 700 x 300
1500 x 1500 x 1500	1500 x 1500 x 1500
	1500 x 1500 x 1200
	1500 x 1500 x 600
	1500 x 1500 x 300

## DETAILED DRAWINGS

Our technical drawings are precise, ensuring accuracy down to the finest detail, a testament to our commitment to excellence.



SCAN TO WATCH OUR ROAD PIT VIDEO.





## OUR PROCESS

Our simplified procedure ensures a hassle-free experience for our customers.



## CERTIFICATION

Our pits are Engineer Certified compliant with Local Council and Transport Authority requirements.



Our Ref: SY190011  
Enquiries to: Brian Cardelli



10 November 2023

Civilcast Pty Ltd  
Building B, 33-83 Quarry Road  
ERSKINE PARK, NSW 2759

Attention: Brian Lee

**RE: FIBRE REINFORCED CONCRETE PITS & RISERS WITH CUSTOM PENETRATIONS  
STRUCTURAL CERTIFICATE - DESIGN**

This is to confirm that our company has carried out structural design for the following Civilcast custom square pits and risers

- 450 x 450 custom pits and risers – Max. 5m installation depth
- 600 x 600 custom pits and risers – Max. 5m installation depth
- 700 x 700 custom pits and risers – Max. 5m installation depth
- 850 x 670 custom pits and risers – Max. 5m installation depth
- 900 x 600 custom pits and risers – Max. 5m installation depth
- 900 x 900 custom pits and risers – Max. 5m installation depth
- 1200 x 900 custom pits and risers – Max. 5m installation depth
- 1200 x 1200 custom pits and risers – Max. 5m installation depth
- 1500 x 1500 custom pits and risers – Max. 5m installation depth
- 1540 x 700 custom pits and risers – Max. 5m installation depth

These custom pits and risers comprise of:

- Texo Reoshore45 macrosynthetic fibre at 3kg/m<sup>3</sup>
- 40MPa concrete grade
- N12 perimeter bar located at top of pit under rebate with adequate cover
- Custom penetrations

The design loads considered for the pits and risers are as follows:

- Ultimate traffic design load of 240kN as per AS3996:2019
- Ground conditions with a soil unit weight of 22kN/m<sup>3</sup>
- Water table at a 1m depth below ground level.
- Surcharge design load of 18kPa at ground level

The maximum installation depth of the pits and risers are as noted.

We certify that these square pits and risers are designed in accordance with accepted engineering practice and is in accordance with the relevant provisions of the following:

- Relevant Australian Standards
  - AS1170.0:2002
  - AS3600:2018
  - AS5100.1:2017
  - AS5100.2:2017
  - AS5100.5:2017
- 100 year design life
- AS3996:2019:- D Class loading from covers and grates (240kN ultimate)
- Transport Roads & Maritime Services
  - QA Specification R11, Stormwater Drainage

<b>BRISBANE</b>	Level 3, 51 Alfred Street, Fortitude Valley QLD 4006	P 07 3021 6600	E QLD-enquiries@vandermeer.com.au
<b>CANBERRA</b>	Level 9, 2 Phillip Law Street, Canberra ACT 2601	P 02 6243 4839	E ACT-enquiries@vandermeer.com.au
<b>MELBOURNE</b>	Level 6, 379 Collins Street, Melbourne VIC 3000	P 03 8614 5555	E VIC-enquiries@vandermeer.com.au
<b>NEWCASTLE</b>	Level 1, 17 Bolton Street, Newcastle NSW 2300	P 02 4910 4035	E NC-enquiries@vandermeer.com.au
<b>SYDNEY</b>	Level 6, 39 Chandos Street, St Leonards NSW 2065	P 02 9436 0433	E NSW-enquiries@vandermeer.com.au

SCAN QR TO SEE HOW OUR  
PRODUCTS ARE MANUFACTURED



**AUSTRALIAN  
MADE & OWNED**

Our locations:

**HEAD OFFICE & WAREHOUSE**

Building B, 33-83 Quarry Road,  
Erskine Park NSW 2759

**MANUFACTURING**

1 Campbell Street,  
Cowra NSW 2794

**NEWCASTLE**

50 Enterprise Drive,  
Beresfield NSW 2332

**QUEENSLAND**

Unit 5, 84 Christensen Road (South),  
Stapylton QLD 4207

**VICTORIA**

77 Canterbury Road,  
Montrose VIC 3765

**ADELAIDE**

9-13 Francis Road,  
Wingfield SA 5013



**1300 012 278**

[sales@civilcast.com.au](mailto:sales@civilcast.com.au)  
[civilcast.com.au](http://civilcast.com.au)