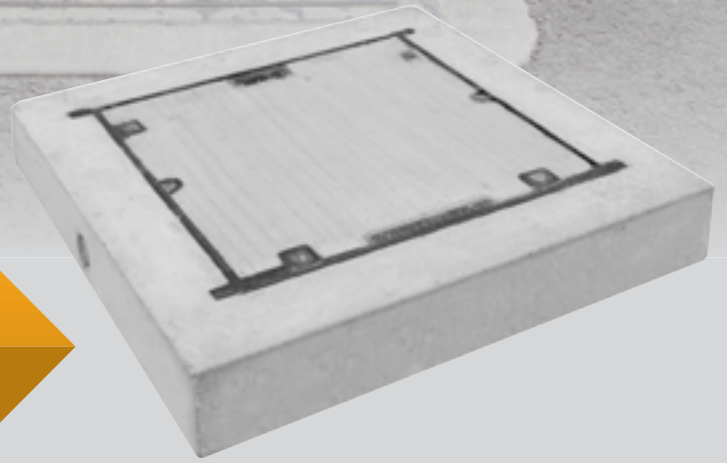




CIVILCAST®

Precast & Steel *Solutions* for Civil

CONCRETE INFILL COVERS - ENCASED



ITEM #	ITEM DESCRIPTION	CONCRETE SURROUND			WEIGHT (kg)
		Length	Width	Depth	
CI44B ENC	450x450 Class B Ductile Iron Infill Cover Encased	800	800	150	194
CI44D ENC	450x450 Class D Ductile Iron Infill Cover Encased	800	800	200	456
CI66B ENC	600x600 Class B Ductile Iron Infill Cover Encased	900	900	150	221
CI66D ENC	600x600 Class D Ductile Iron Infill Cover Encased	1000	1000	200	424
CI96B ENC	900x600 Class B Ductile Iron Infill Cover Encased	900	1200	150	290
CI96D ENC	900x600 Class D Ductile Iron Infill Cover Encased	1000	1300	200	528
CI99B ENC	900x900 Class B Ductile Iron Infill Cover Encased	1200	1200	150	365
CI99D ENC	900x900 Class D Ductile Iron Infill Cover Encased	1300	1300	200	670
CI912B ENC	900x1200 Class B Ductile Iron Infill Cover Encased	1300	1600	150	540
CI912D ENC	900x1200 Class D Ductile Iron Infill Cover Encased	1300	1600	200	1000
CI1212B 2P ENC	1200x1200 Class B 2 Part Ductile Iron Infill Cover Encased	1600	1600	175	684
CI1212D 2P ENC	1200x1200 Class D 2 Part Ductile Iron Infill Cover Encased	1600	1600	225	1032